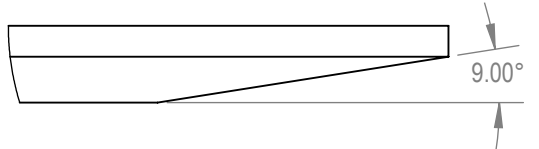
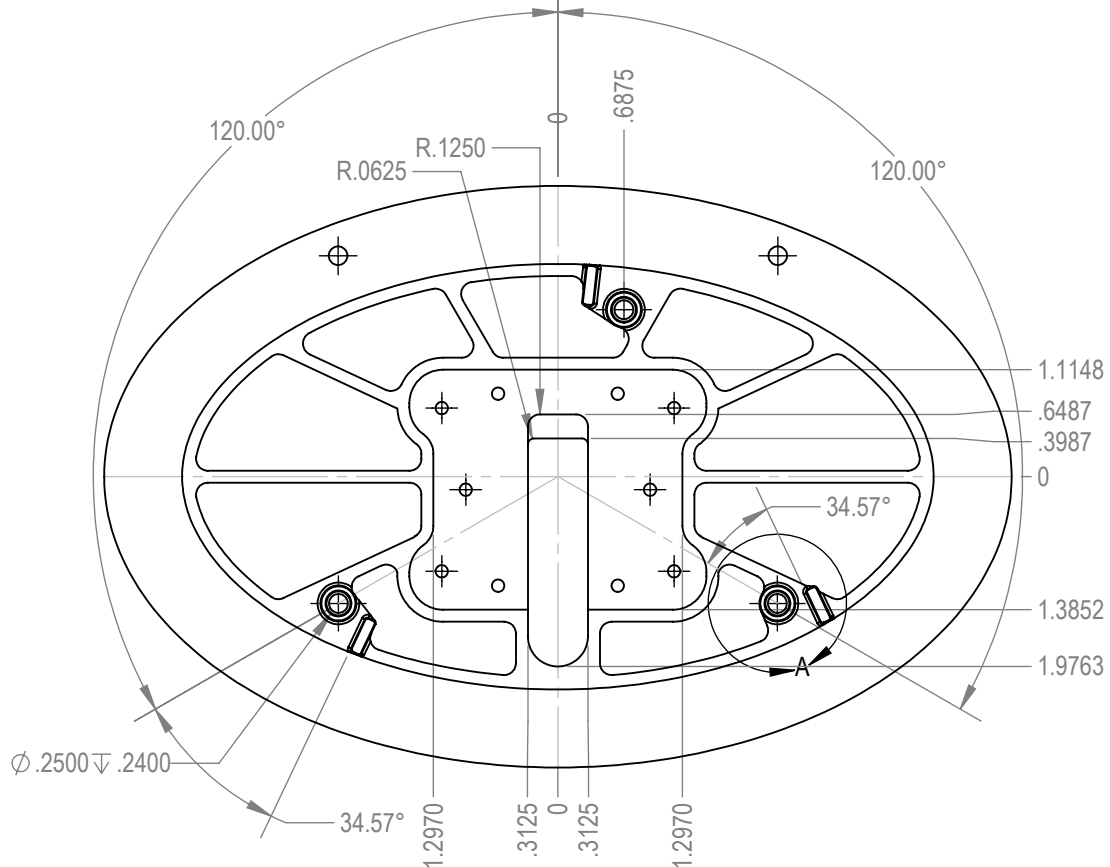
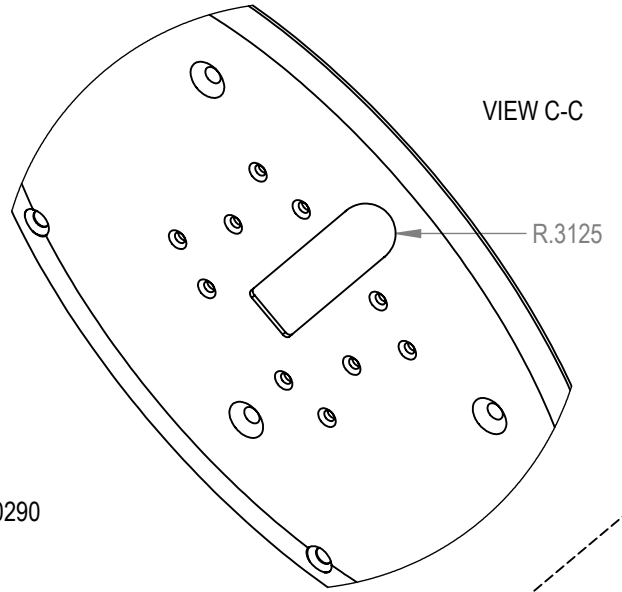
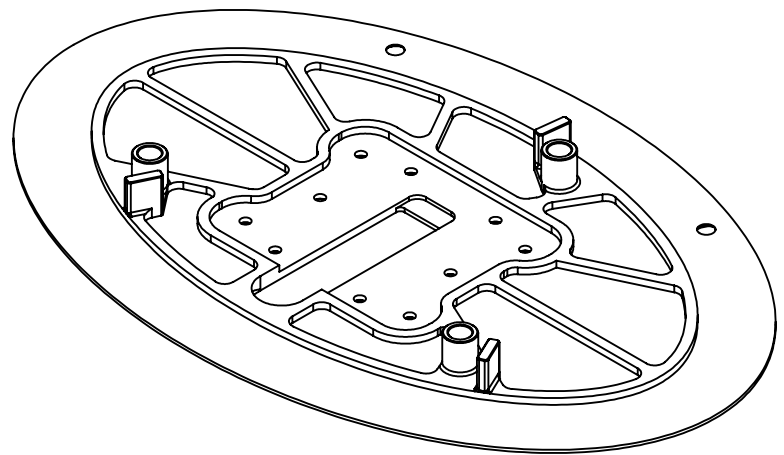


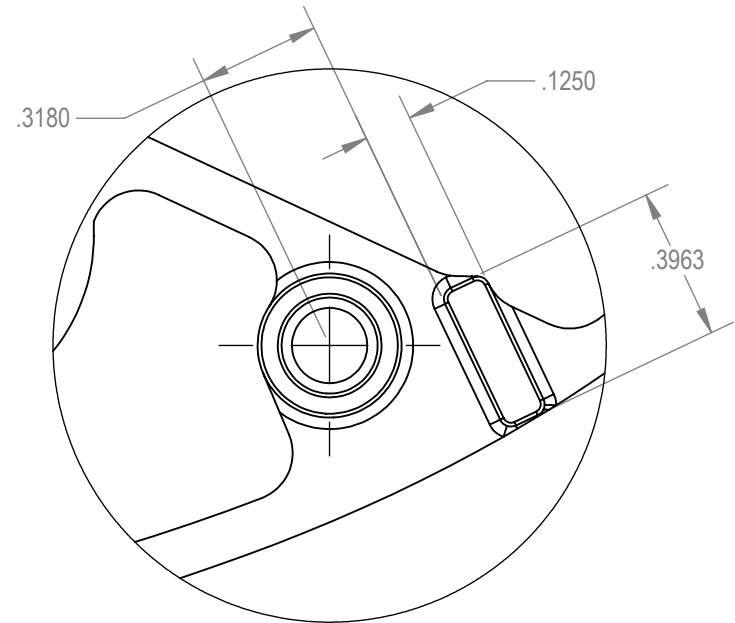
REV.	DESCRIPTION	DATE	DRAWN
A	REDESIGN	3/29/2013	CAP
B	(2/24/16) MOVED PROBE MOUNTING PLATES 0.125" & ENLARGED PROBE OPENING TO ALLOW FOR AN ANGLE OF 40 DEGREES (9/19/16) ADDED 4 HOLES TO WORK WITH THE 5 HOLE ANGLE BRACKETS	9/19/2016	CAP



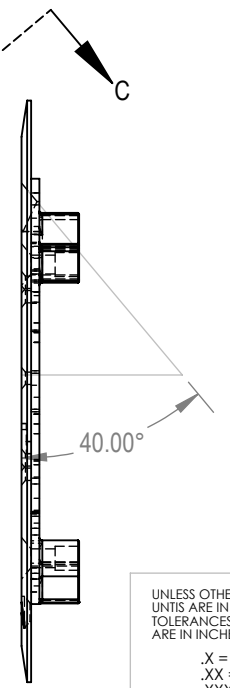
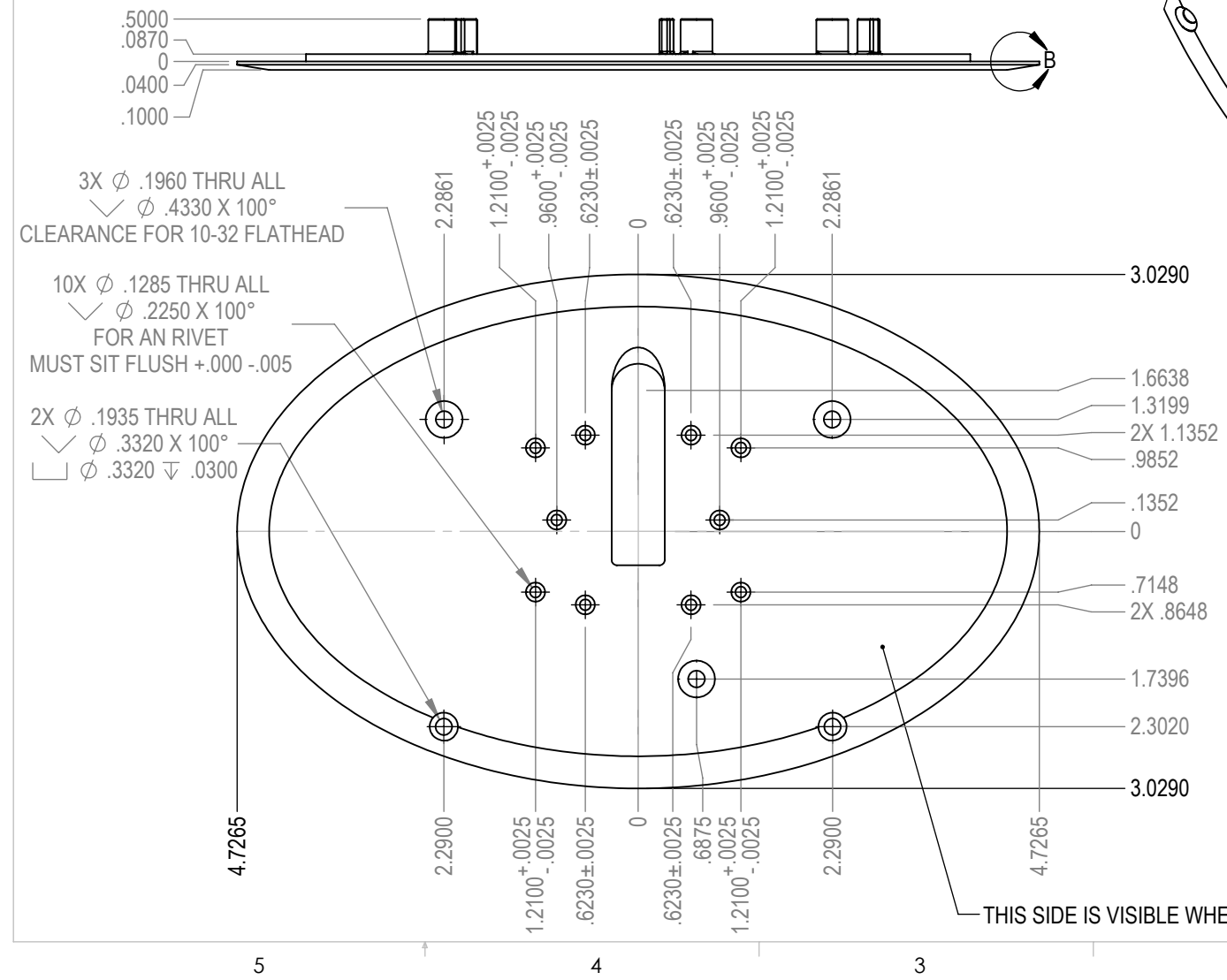
DETAIL B  
SCALE 4:1



VIEW C-C



DETAIL A  
SCALE 2:1



NOTE:  
- SEE CAD MODEL FOR OTHER DIMENSIONS

FINISH:  
- CLEAR ANODIZE  
- DO NOT DAMAGE OR DEFORM PART  
- COAT PART EVENLY FOR UNIFORM FINISH  
- THE FLAT SIDE & ANGLED SURFACE ARE VISIBLE WHEN INSTALLED



UNLESS OTHERWISE SPECIFIED: UNITS ARE IN INCHES AND TOLERANCES ON DIMENSIONS ARE IN INCHES  X = ±.03 .XX = ±.01 .XXX = ±.005 DEG. = ±1° X/X = ± 1/16	DRAWN: CAP	PROJECT: AOA - PROBE MOUNT
	DATE: 8/11/2017	TITLE:
	SHEET: 1	CIRRUS G3 MOUNTING PLATE
	SCALE: 1:2	
	SIZE: B	
	QUANTITY:	
	MATERIAL: 6061 ALUM	PART # AOA-4150-1

B